

FOR SALE

466th Avenue (SD 17)

267th Street (CR 148)

PLOOSTER INVESTMENT LAND

46620 267 ST, Sioux Falls, SD, 57106



STEVE NATZ COMMERCIAL REAL ESTATE

NE corner of 41st St. and SD 17

12+ \- Acres

Commercial (to be zoned)

522,720 SF +/- \$4.00 SF

\$2,090,880

Commercial ground located in Minnehaha County, SD.

Water at property - Rural Water

Electricity at property - 3 phase available

2 - ingress/egress - with maintenance agreement

Hard surface roads - West and South

1,234' highway frontage - West (469th)

534' highway frontage - South (267th - 41st St.)

Taxes: TBD

Neighbors include: Performance Plus Arabians

Apple Tree Toy Sheds, Wild Water West,

Pump N Pak, Horse Power Handi Riders

Steve Natz

Steve Natz Commercial Real Estate

SNCRE, LLC - Sioux Falls, SD 57106

605.728.9196 - stevenatz.com

steve@stevenatz.com



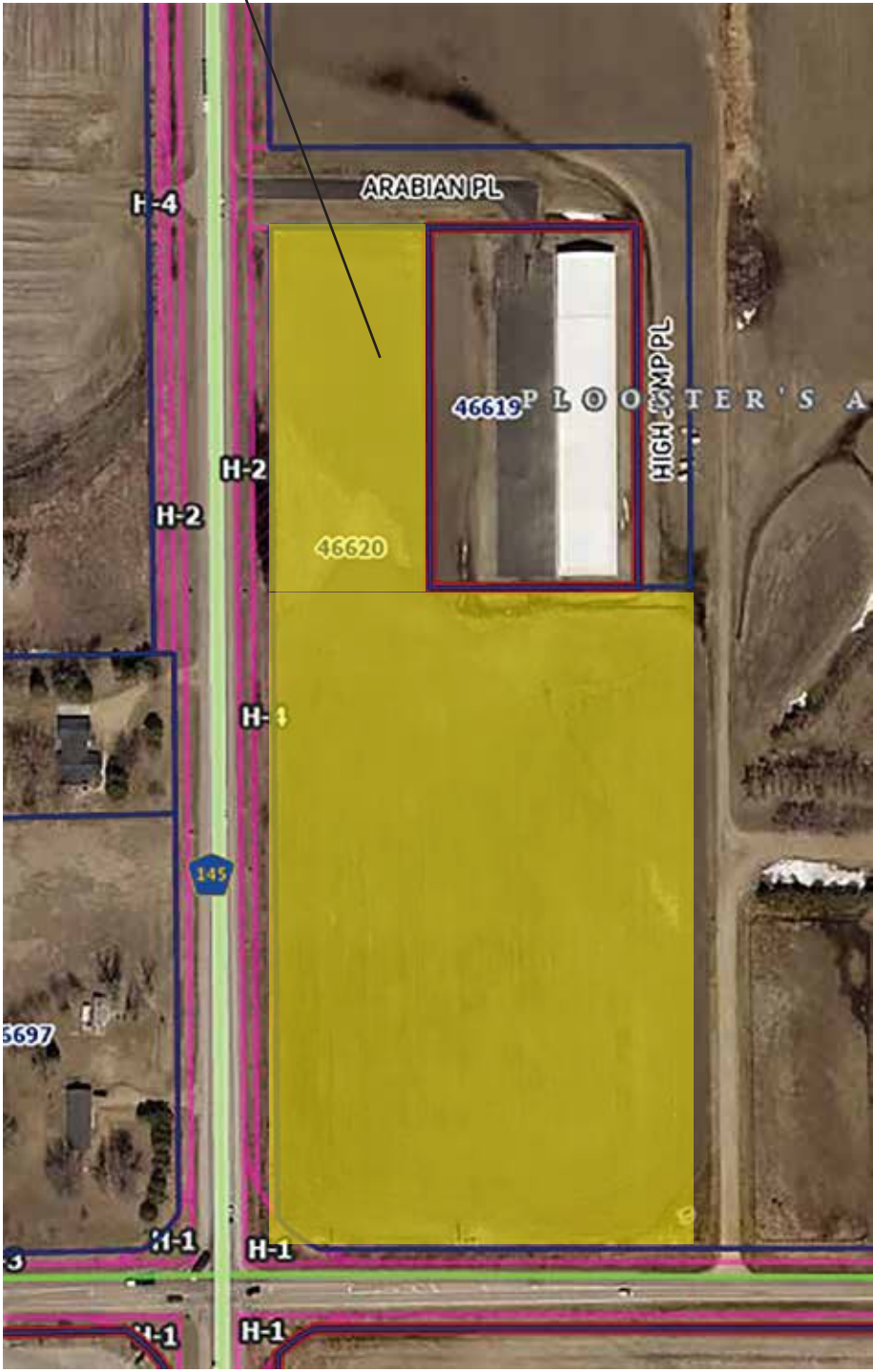


466th Avenue (SD 17)

267th Street (CR 148)



STEVE NATZ COMMERCIAL REAL ESTATE



NO WARRANTY OR REPRESENTATION, EXPRESS OR IMPLIED, IS MADE AS TO THE ACCURACY OF THE INFORMATION CONTAINED HEREIN, AND THE SAME IS SUBMITTED SUBJECT TO ERRORS, OMISSIONS, CHANGE OF PRICE, RENTAL OR OTHER CONDITIONS, PRIOR SALE, LEASE OR FINANCING, OR WITHDRAWAL WITHOUT NOTICE, AND OF ANY SPECIAL LISTING CONDITIONS IMPOSED BY OUR PRINCIPALS. NO WARRANTIES OR REPRESENTATIONS ARE MADE AS TO THE CONDITION OF THE PROPERTY OR ANY HAZARDS CONTAINED THEREIN ARE NOT TO BE IMPLIED.



STEVE NATZ COMMERCIAL REAL ESTATE

Steve Natz Commercial Real Estate - SNCRE, LLC - Sioux Falls, SD 57106 - 605.728.9196 - stevenatz.com - steve@stevenatz.com